



COMPANY PROFILE

NICHOLAS & ALEXANDER ARCHITECTS



www.naarchitects.com.au



ABOUT US

The Practice of Nicholas and Alexander Architects was created to provide a multi-faceted architectural practice able to deliver a total service in a wide spectrum of building design.

The two principals Nicholas Daviotis and Alexander Gecse bring together a wealth of experience having practiced as Architects for over 30 years. Their complimentary skills create a dynamic, design driven Architectural practice experienced in a wide range of Building commissions.

The Practice staffing levels fluctuate to meet project demands. Currently Nicholas and Alexander employs eight full-time professional staff and has extensive links with contract Architects and other colleges able to increase staff levels to meet requirements.

- **MISSION**

Nicholas and Alexander Architects are dedicated to realizing the inspired visions of our clients.



WHAT WE DO?

GOALS & OBJECTIVES

Nicholas and Alexander Architects aspire to provide the best professional services in the delivery of architecture that meets the goals and aspirations of our Client. We work hard to inspire and lead the whole of the design team including consultants; authorities and the local community towards a common vision which recognizes the context and maximizes the opportunities that each site offers.

The emerging architecture is responsive; cost-effective; energy efficient; and clear in its vision. It fits within its context like a glove; is responsive to the end-user market; meets the aspirations of the local community. These common shared goals ensure the on-going viability and desirability of the building. It becomes timeless.

With clear and identifiable goals, Nicholas and Alexander Architects provide a service of excellence in all facets of architectural consultancy.





EXPERTISE IN A WIDE RANGE OF PROJECT TYPES

RESIDENTIAL

Single individual dwellings
Multi-unit medium density
Housing
Multi-level Apartment Buildings
Shared Accommodation

COMMERCIAL/RETAIL

Offices
Shops
Commercial Interiors
Peripheral Sales
Restaurants
Fast-food outlets
Car Wash
Supermarkets
Car Showroom

COMMUNITY / INSTITUTIONAL

Community Centre Facilities
Child Care Facilities
Libraries
Sports Pavilions
Clubrooms
Churches
Nursing Homes
Schools

INDUSTRIAL

Manufacturing Facilities
(Office/Production/ Warehousing)
Food Production Facilities
(Office/Production/Warehousing)
Dangerous Goods Facilities
Chemical Facilities
Warehouse Facilities
Logistics Facilities

EMERGENCY SERVICES

Firestations
Disaster Recovery

OUR TEAM

The Company has a strong belief that the result of any endeavor is directly proportional to the input of human and knowledge resources that are allocated to it. An excellent design solution demands an excellent brief and a complete understanding of the brief. A great deal of attention is given to identifying and clearly setting out the goals of each project along with compiling and insuring the accuracy of information upon which the design is based.

TEAMWORK

Nicholas and Alexander believe strongly in Teamwork managing and bringing together people with appropriate skills towards a common goal. Either or both directors are directly involved on each project along with senior associates and support staff as required.



NICHOLAS DAVIOTIS
DIRECTOR



ALEXANDER GECSE
DIRECTOR



DIMITRIOS BLAZOS
ASSOCIATE DIRECTOR



JASON VENTER
DESIGN LEAD



JAMES HYLTON
DOCUMENTATION LEAD



MARGARET SWIMMS
SENIOR DOCUMENTER



JASMINE CHOUCAIR
GRADUATE



DAPHNE RIBET
INTERIORS LEAD



MUNICIPAL / COMMUNITY PROJECTS

Nicholas & Alexander Architects have been on select architectural panels and have carried out works for the following Municipal Councils. We have carried out in excess of 70 projects which are Local Government related for the following :

- City of Frankston
- City of Bayside
- City of Yarra
- City of Greater Dandenong
- City of Monash
- City of Boroondara
- City of Stonnington

COMPANY ACCREDITATIONS

·Nicholas & Alexander Architects and the principals are Registered to practice in the following states:

- 1.Victoria;
- 2.NSW
- 3.Queensland
- 4.South Australia
- 5.Western Australia
- 6.Tasmania
- 7.Northern Territory

·RAIA A+ members
·Nicholas & Alexander are registered with the Victorian Government Construction Register.



CHILDCARE

Over the years, Nicholas & Alexander have been involved in several new childcare centre developments for various councils. Given our extensive knowledge in the design of these facilities, we were involved in reviewing 19 of the City of Baysides Childcare & Preschool centres to bring them up to the current standards. Below is a list of several Childcare centres we were involved in.

| Client | Project Description |
|------------------------|---|
| Frankston City Council | The Pines - Childcare Centre |
| Bayside City Council | Sandringham Childcare 1 Sandringham Road, Sandringham |
| Bayside City Council | Bayside Tennis Pavilion - Childcare |
| Bayside City Council | Hampton Childcare Alterations |
| Bayside City Council | Highbett Community Centre - Childcare & Children Maternity Centre |
| Bayside City Council | Jack & Jill Kindergarten |
| Private Client | Clayton Childcare |
| Bayside City Council | North Brighton Childcare - Alterations + Additions |
| Private Client | Beaumaris Playhouse - Alterations |
| Private Client | Highbett Childcare - Alterations |
| Private Client | Heidelberg Pre-School |

RESIDENTIAL

Nicholas & Alexander have a wide range of experience in multi-unit and apartment buildings. Each project is carefully tailored to reflect the complex and sometimes competing demands of Client vision; site opportunities; regulatory process; financial targets; and end-user expectations.

| Year | Client | Project Description | No of Units |
|------|-------------------------|---|-------------|
| 2023 | Dr Sam Liveriadis | Apartment Development - Boronia | 43 |
| 2022 | Mr and Mrs C. Sciclunas | Luxury Residence - Blackrock | - |
| 2021 | Giannakis Residence | Luxury Residence - Mornington | - |
| 2017 | Mihaloudakis | Luxury Residence - Lysterfield | - |
| 2015 | Kyriacou | Apartment/Supermarket Development - Northcoate | 44 |
| 2014 | Landmark Developments | Apartment Development - Doncaster | 84 |
| 2014 | Dr Peter Moran | Moran Country Residence - Buxton | - |
| 2014 | Kipouropoulos Family | Luxury Residence – Narre Warren North | - |
| 2014 | Mr Chris Karambelas | Mixed Use Development – Port Melbourne | 6 |
| 2013 | Kouts Family | Alterations to Residence - Brighton | - |
| 2012 | CIP | Mixed Use Development (30 Levels) – South Yarra At Feasibility Stage and also includes a mix of Offices and Parking. | 90 |
| 2012 | Point Property Group | Mixed Use Development Prahran | 45 |

RESIDENTIAL



COMMERCIAL

Nicholas & Alexander have a wide range of experience in commercial projects including as follows: Office Buildings; Retail; Showrooms; Supermarkets; neighbourhood shopping centres

| Year | Client | Development | Location | Area (sqm) |
|------|--------------------------|--|----------------|------------|
| 2022 | Cyberra Investments | Honda Corporate Offices | Moonee Ponds | 1000 |
| 2020 | Melton City Council | Office Warehouse Development | Ravenall | 2000 |
| 2019 | Cyberra Investments | Austalian Taxation Office – Fitout | Moonee Ponds | 6000 |
| 2019 | Colliers International | Re-Cladding Building | Truganina | 2000 |
| 2019 | Cyberra Investments | Austalian Taxation Office – Base Build'g | Moonee Ponds | 6000 |
| 2019 | Monash University | Re-Cladding various Buildiings | Clayton Campus | |
| 2016 | City of Stonnington | Malvern Valley Golf Club | Malvern | |
| 2015 | Point Property Group | Office Development | Mooralbark | 1,500 |
| 2014 | Monash University | Post-graduate Association Facility | Caulfield | 1,000 |
| 2014 | Uniting Care-Connections | Upgrade Community Resource Centre | Cranbourne | - |
| 2014 | Uniting Care-Connections | Upgrade Community Resource Centre | Narre Warren | - |
| 2014 | Monash University | Office of Foreign Students - | Caulfield | 2,000 |
| 2002 | PPG | Subaru Car Showroom | Mentone | |

COMMERCIAL



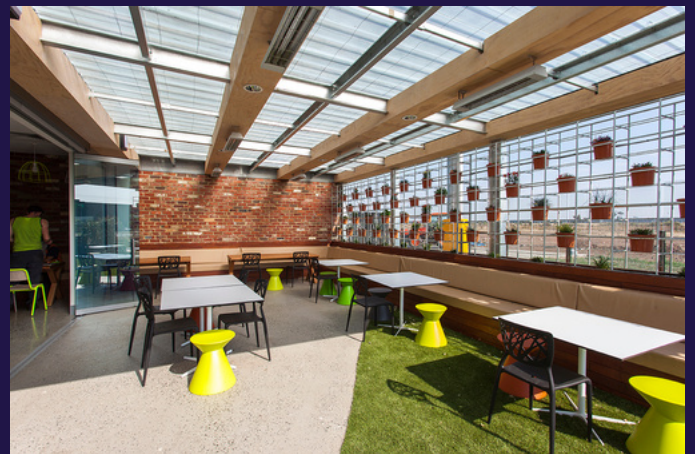
INDUSTRIAL

| Year | Client | Warehouse Developments | Location | Area (sqm) |
|------|--------------------------|---|--------------------|------------|
| 2022 | Frasers Property | CTI-GMK Office Warehouse | Epping | 27000m2 |
| 2022 | Frasers Property | Komatsu – Office Warehouse Develop. | Truganina | 30000m2 |
| 2022 | Frasers Property | National Tiles – Office Warehouse Develop. | Truganina | 28000m2 |
| 2021 | Frasers Property | CTI-GMK – office Warehouse Development | Yatala | 23000m2 |
| 2021 | Frasers Property | Décor – Rubix Direct Office Warehouse | Dandenong South | 39000m2 |
| 2021 | Frasers Property | IVE Group – Office Warehouse Development | Braeside | 30000m2 |
| 2021 | Taylor's Construction | Bunzl Office Warehouse Development | Greystane. NSW | 21000m2 |
| 2021 | Hansen Yuncken | InfraBuild – Office Warehouse Development | Lyndhurst | 16600m2 |
| 2021 | ESR | Office Warehouse Development | Sunshine West | 20400m2 |
| 2021 | Meyer Timber | Office Warehouse + Showroom | Yatala, QLD | 12000m2 |
| 2020 | CIP | Asahi Production Facility | Walkuraka, QLD | 20000m2 |
| 2020 | Frasers Property | Vida XL Storage Facility | Tarneit | 68000m2 |

INDUSTRIAL



INDUSTRIAL





N.A CONSULTANTS PTY LTD

TRADING AS NICHOLAS & ALEXANDER ARCHITECTS
37 BEVAN STREET ALBERT PARK, VICTORIA, 3206

T: +61 3 9696-5822

Email: Alex.g@naarchitects.com.au

www.naarchitects.com.au